

THE GOLD PAN NEWS[®]

August 2011

vol. 12 - # 8



Welcome New Members

Kevin Brunk
Mike Schneider
Mike Erz
Lee Pizzuto
Derek Henriksen

THANK YOU for Your Donations !!!
Paul Gates

BHPC Officers

President	Mike Borden (605) 341-0483
Vice President	Wallace "Wally" Slattery (605) 717-1512
Treasury	Dean Duncan (605) 350-6364
Secretary	LuAnn Denke (605) 342-0005
Outings Director	Jeff Geist (605) 722-7018
Raffles & Prizes	Nelda Thiel (605) 923-4059
Claims Safety	Richard Nash
Club Photographer	Michelle Snyder
Equipment & Mechanic	Devon Nikolas
Membership Director	Andy Goodwin (605) 584-4698

Please contact the club officer for the type of question you have to get the best possible answer.

Black Hills Prospecting Club July 16, 2011 Minutes

B.H.P.C. met at the "Park Placer" site Saturday, July 16, 2011.

Officers present: Pres. Mike Borden; V.P. Wally Slattery; Membership Director-Newsletter Editor-Webmaster Andy Goodwin; Raffles and Auctions Coordinator Nelda Thiel; Equipment Mgr. Devon Nikolas; Claims Safety Director Richard Nash and Outings Coordinator Jeff Geist.

Pres. Mike Borden called meeting to order.

V.P. Wally Slattery spoke to the formation of a committee to write a proposal on Recreational Mining in the Black Hills. Wally also updated members that at 2 p.m. today, he would be hosting youth from a Wisconsin Chippewa tribe demonstrating prospecting techniques. He asked for volunteers to assist him.

Webmaster Andy Goodwin informed members of a problem with information on our server (Computer) requesting members to bear with us re: Newsletter(s). Andy discussed a store front in the web site (to sell) and advised good results. (Richard Nash offers his item for sale now at the reduced rate of \$1,000.

Safety Director Richard Nash advised members to use caution, as this is a new area especially concerning children. He advises to be careful where you are at and suggested placing orange ribbon (or red) around any area needing to be flagged as a watchful area. Richard relayed knowledge of a cave at the bottom of the creek; for example as a hazardous area to be aware of.

Discussion continued on routes getting down to panning areas.

Outings Coordinator Jeff Geist announced that our grills are "shot" and discussion continued about providing food at our outings. Consensus of members present suggested a Put-Luck. The B.H.P.C. will furnish hot dogs. Club members (possibly breaking it down who brings what using an alphabetical system was suggested) will furnish all other food items.

Jeff also informed members that a purple classifier is missing.

NEXT OUTING: Will be at the Garnet site on Sat; Aug. 20th

Discussion on an outing to Zortman, Montana took place. This would be Aug. 6-13, 2011.

NEW BUSINESS:

Park Placer claim = \$ 500.00 During the last 2 weeks have been working hard to get this ready.
Balance in Account = \$ 5,766.00

Y.E.P (Year End Party) is 2 months away. One suggestion of a possible location for this event is at the Gas Light in Rockerville. Some items included in the Mega Raffle are: Mini-banker; G.P.S.; Knives;

Metal Detector; etc. Coordinator Nelda Thiel asks for members to give us their ideas/suggestions for items.

A new Secretary is needed. LuAnn Denke offered to fill in for this job. Wally Slattery nominated her with Nelda Thiel seconding the motion. Members voted LuAnn in as the new Secretary => (Thanks!)

A question was raised about Lew Wight's claim. The cost would be \$4-5 K with difficult access. It was advised that \$4 K would be the highest one should pay.

Coordinator Nelda Thiel announced that a club member has made a quilt to be raffled off at \$5.00 a square with no limit to how many "squares" you may buy.

*(Details of raffle drawings will follow these minutes.)

Meeting adjourned at 12:40 p.m.

Submitted by "New" Secretary
LuAnn M. Denke

Raffle Drawing results:

*
Ticket # 639797 shovel #...819 headlamp #...754 knife #...731 gloves
#... 557 flashlt. #...789 orange pocket knife #...825 blue pan
... 596 flashlt. #...686 yellow gloves #...714 scissors #...590 screwdriv .set
... 552 meter #...551 adult use knife #...642 chair #...566 lantern
... 636 gold nugget = congrats to Jason Jeffrey !



**WILD & WOOLLY DAYS
IN THE OLD
BLACK HILLS**

by
Wallace "Wally" Slattery

One of my very favorite books is WARPATH AND BIVOUAC, by John F. Finerty, a newspaper reporter who traveled with the Crook column chasing the Lakota Sioux Indians during the summer of 1876. During a trying, starving march through the mud, led by General Crook, the column fought one major (Rosebud) and one minor (Slim Buttes) battle with the Lakota, before coming into the Black Hills through Crook City and on into Deadwood. I cannot recommend the book enough - it is simply hard to put down.

Finerty's descriptions of both Crook City and Deadwood in September 1876 are fascinating to anyone who loves these old Hills as we prospectors do, and I will quote from pages 209-211:

"Deadwood, in the fall of 1876...possessed a multitude of variety theaters and a crowd of brazen and bedizened harlots, gambling hells, drinking dives, and other moral abominations.... It had a long straight frame or log house street....Deadwood was shut in by high wooded hills which seemed to choke off air currents....The tendency was to force the place along a ravine and convert it into a geometrical line - length without breadth. A couple of fires and a first-class cyclone have since partially cured Deadwood of its tendency to burrow in the valley. Nuggets and gold dust, quartz and placer mining made up the conversation of those times in what might be called Deadwood society. I was shown specimens of gold in all forms until I felt like a jaundiced patient - everything I looked at turned yellow....the placer mines were already giving indications of exhaustion....Deadwood had finally to rely upon the quartz mines and the men with capital enough to work them for such prosperity as

she now enjoys.

In the evening I took a stroll around the city, and visited everything of interest. Wearing cavalry pants, and looking altogether like one of Uncle Samuel's boys out of repair, the hardy and hearty miners took it for granted that I was earning thirteen dollars per month[!] fighting Indians. As I wished to post myself on the country I did not undeceive them, but was compelled to swallow enough "forty-rod" to kill an ordinary alderman.

I visited half a dozen hells, where I noticed some Chicago toughs, all engaged in the noble art of faro or some other thimble-rigging devilment. In that lively time Deadwood sports killed off a man or two a night. Between them and the Sioux it was hard to keep the population up to the maximum standard. Women...acted as dealers at many of the tables, and more resembled incarnate fiends than did their vulture-like male associates. I observed that decided brunettes or blondes were more engaged in evil works than their more negative fellow-women. Most of the miners would prefer playing faro or monte with men, for the women were generally old and unscrupulous hands, whose female subtlety made them paramount in all the devices of cheating and theft. I observed one of them - either French or Italian - something of the Latin order anyway - with some attention. She had a once-handsome face, which crime had hardened into an expression of cruelty. Her eyes glittered like that of a rattlesnake, and she raked in the gold dust or chips with hands whose long white fingers ...reminded one of a harpy's talons." Well, the book is simply marvelous. You can get it on Amazon Press, and it's a worthy investment.

Wallace Slattery

Around the Potbelly Stove



Weight Conversions

	1 Troy (Ozt)	1 Imperial (Oz)
Grams	31.0	28.3
Grains	480	437.04
Dwt	20	18.21

Converting Calculations

Convert	to	Multiply by
Grams	Grains	15.4324
Grains	Grams	.0648
Grams	OZ(AVDP)	.0353
Grams	Ozt	.03215

HOW TO SET THE CORRECT ANGLE ON YOUR SLUICE BOX

The bad point is there's no set answer, and this is something I have had a lot of experience in. Every creek is different. There is no stock setting to go by. Variations include water speed, depth, angle the creek is running, and specific gravity of the dirt, among others. There are some suggestions I would pass on:

1. Set your box so it is running 1 1/2 - 2" of water. This can be tough, but is important!
2. Set it so there's about an inch of drop per foot of sluice. In other words, a 3' sluice should have about 3" of drop from the front to the back.
3. A good rule of thumb: It should take about 30-45 seconds for the dirt to clear through your sluice, from the time you drop the dirt in the front until the lighter dirt and larger gravel passes out of the back of the sluice.
4. One more thing: If you can get your sluice to produce a "boat wake" - a V-shaped wave in the front of the sluice, you will find that the sluice generally runs more cleanly and efficiently. This comes courtesy of Lew Wight, who taught it to me. It works!

Wallace Slattery

Additional Meeting Minutes for 7/16/11

Meeting was called to order by Mike Borden Club President, at 12:15 pm.

Vice President Wally Slattery:

1. The Black Hills Pioneer has written a very positive series on gold prospecting in the Black Hills.
2. Wally reminded members that our committee to liberalize laws regarding recreational mining needs to get a proposal together ASAP. Mike said that the committee will be called together shortly.
3. Wally said that Lake Superior University has a group of Chippewa and Ojibway Indian teenagers coming this pm, and requested help working with them. Our thanks to everyone who pitched in - the kids really had a ball. Mike noted that our present secretary, Nyla Potter, lives in the eastern part of the state, and it would be more convenient if we could get a local secretary. Lou Ann Denke volunteered and was unanimously elected to the post. Our thanks to Nyla for helping the past year, and to Lou Ann for volunteering to help.
taken by Wallace Slattery

Outing at the Park Placer Claim

You can see all the photos from this year on our website.

www.blackhillsprospectingclub.com

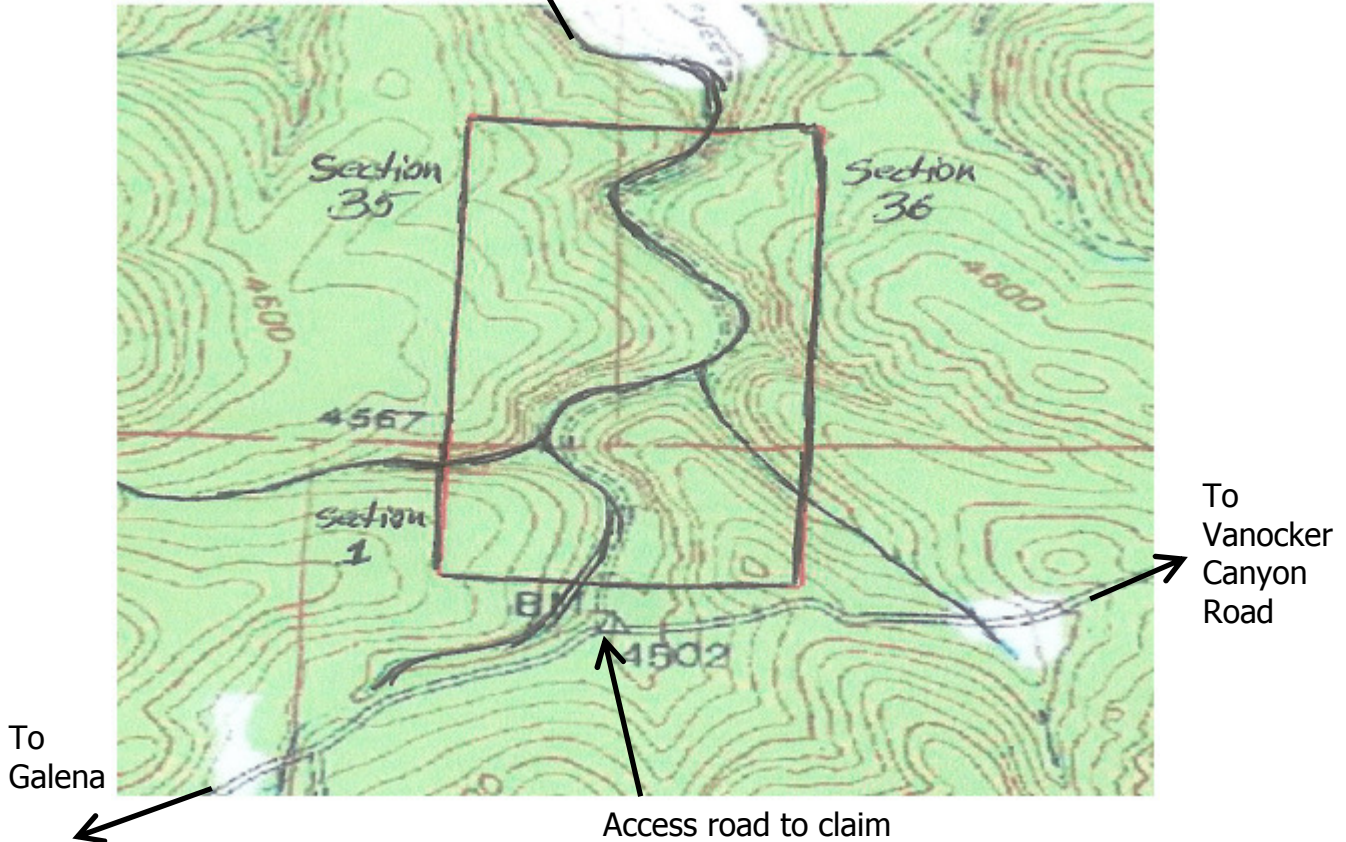


Park Placer - BHPC's New Claim

To Husker
Note:
this road does NOT go clear
through to the Husker side of the
Camp 5 road

Map & Directions to Park Placer claim

Pan and Sluice ONLY



From Rapid City take I-90 to the first exit for Sturgis and go under the Hwy to follow the Vanocker Canyon road South from Sturgis. Go about 4 miles then turn right on the dirt road that goes to Galena. Go about 2 miles to FS road 170.4D and turn right.

Page 27

GPS coordinates will be coming Soon
Panning and Sluice ONLY !

Take this page out and put it in your member booklet



Black Hills Prospecting Club
c/o Andy Goodwin
11228 Cougar Ct
Lead, SD 57754

ALSO VISIT OUR WEB SITE AT www.blackhillsprospectingclub.com

Our Next Outing
will be...

Regular Monthly Outing

Date: August 20th
Place: Garnet Claims Area
Time: 9 AM

August 2011

Sun Mon Tue Wed Thu Fri Sat

	1	2	3	4	5	6
7	8	9	10	11	12	13
14	15	16	17	18	19	20
21	22	23	24	25	26	27
28	29	30	31			